



# Residential Retaining Wall Project

# Lake Erie Coast Retaining Wall Project

Though we have a long history of landscape construction, we are excited to add a new project type to our portfolio.

Lakefront residents contacted us to work on building a retaining wall and other structures to help them take advantage of their beautiful waterfront property.

They had concerns about the erosion of the land directly on the water and wanted to help ensure they would be able to use it for years to come. Further, they wanted to be able to access the water and store their watercraft.

The client also had an existing house on the property and we also were contracted to **demolish the existing home** (add link to demolition)--last fall they began home project in the spring--before they began construction on their new home.

We were therefore able to access the top of the cliff without any limitations.

# Client Needs and Requests

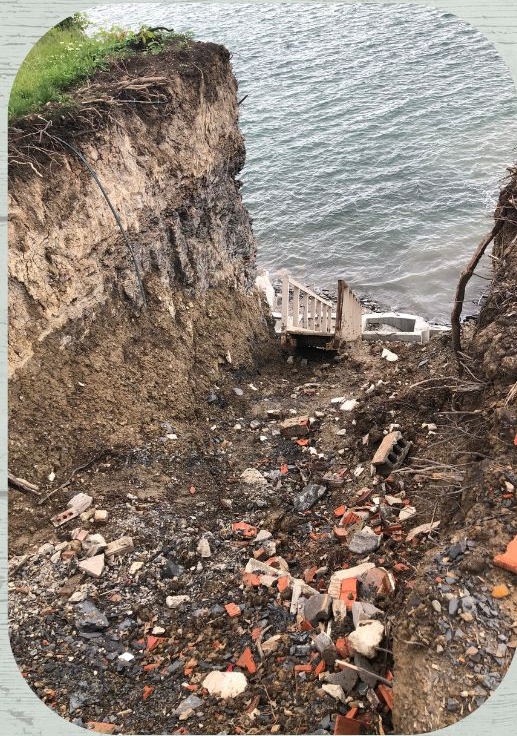
Goals: control erosion—hill was collapsing core—OH engineers—put systems in place (drain tiles behind the walls-gravel—drainage pipe) then poured footers—support the wall and all of the stairs.

Retain entrance to and use of the the water with ease of access to the property off the water—staircase down, a pier, a garage—we designed the system—stairs incorporated within the walls.

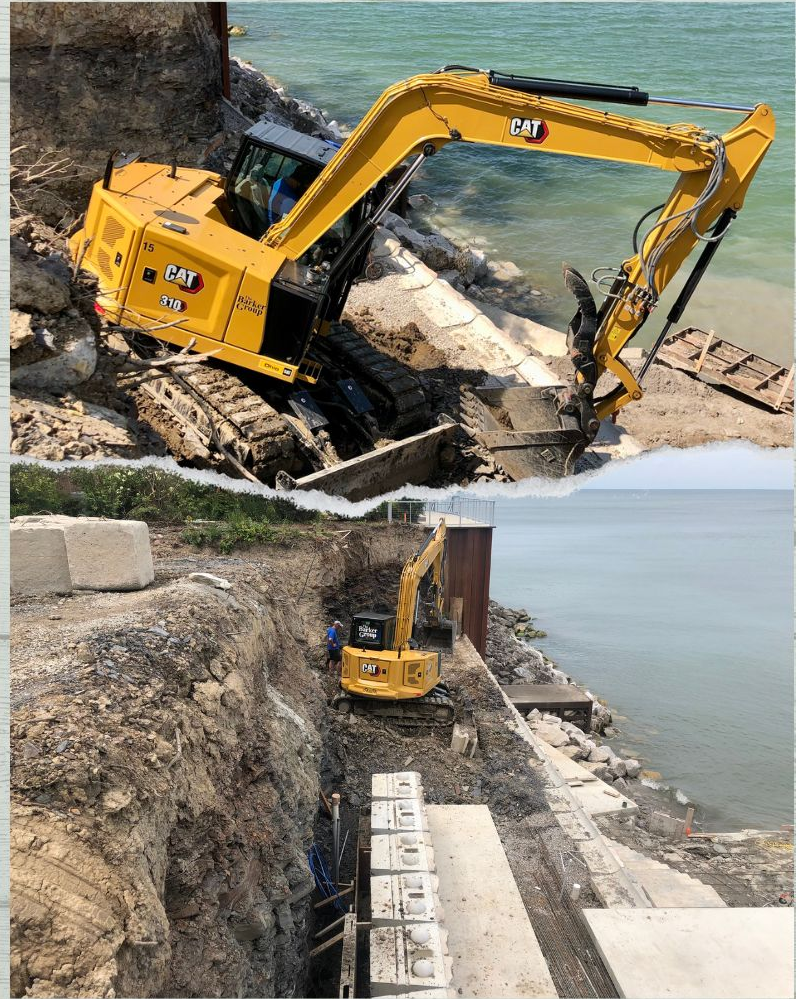
Build a structure to store their watercraft, boats, jetskis—boat garage, they can store all items fo water use within—by doing all of this, we saved their property for eroding into the lake.

Set for 100 years.

Before...



The  
Barker  
Group



# Our Solutions

Months of planning (can handle 1 or 2 a year)

Demo of house

Access to hillside (didn't need to use barge company)

Excavation of the hillside

Installed gravel, drain tiles and a drain pipe

Installation and assembly of three different levels of separate interlocking Redi-Rock walls

Installation and assembly of three sets of steps with custom made aluminum railings

Advised construction of boat house structure

Advisement and installation of 'LED' lighting in the walls to highlight the stairs (for safety purposes)

**During...**



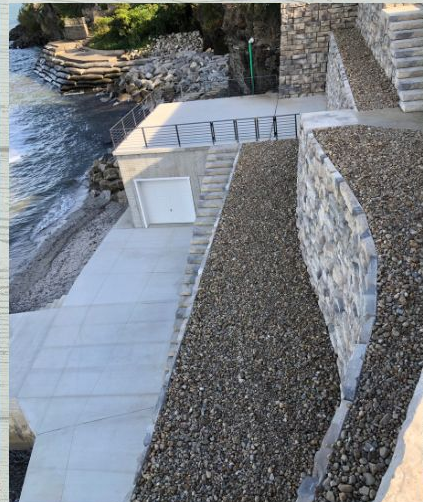
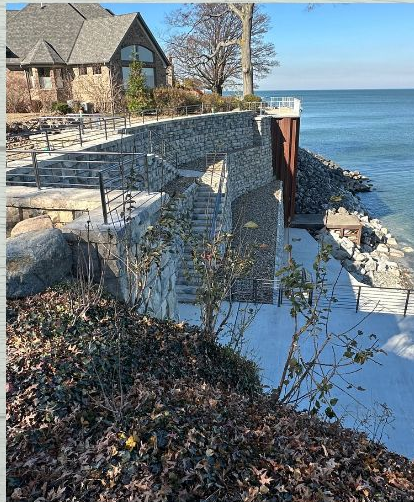
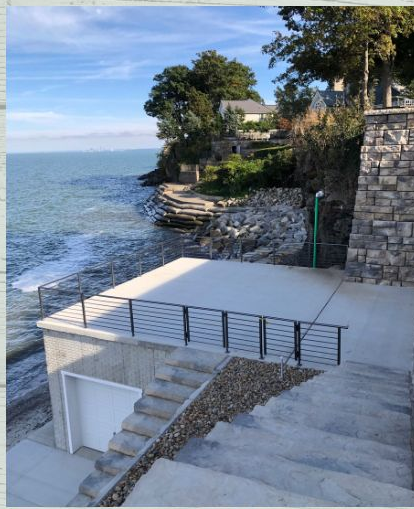
**The  
Barker  
Group**

**After!**



The  
**Barker  
Group**

**After!**



The  
**Barker  
Group**



# Project Outcomes

A beautiful, newly constructed retaining wall with a multiple sets of stairs, railings, access to the water, watercraft storage, and continuous access without worry of erosion.

We are proud to add this updated property landscape to our portfolio.

Contact us at [info@jbarkerlandscaping.com](mailto:info@jbarkerlandscaping.com) and we would be happy to discuss how we can brighten your commercial landscape!

Find more of our inspired landscape projects on our gallery pages at [jbarkerlandscaping.com](http://jbarkerlandscaping.com)